



# Planning for Climate Change

Caroline King  
Director of Planning

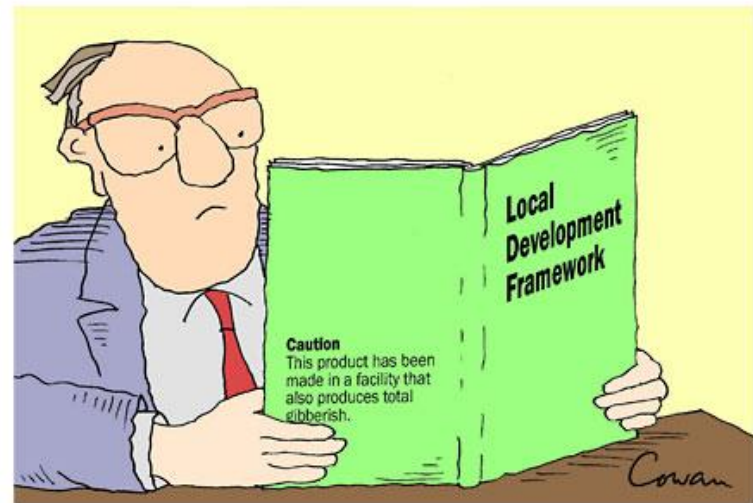
ON THE EDGE OF  
EVERYWHERE

# Town of Yarmouth Public Perception

## •Negative Notions & History

- Regulatory
- Rigid
- One-Size fits all
- Downtown - South End -  
Starrs

## •*Progressive Climate Change Policy (2013)*



"OK, LET'S SEE YOUR BUILDING PERMIT"

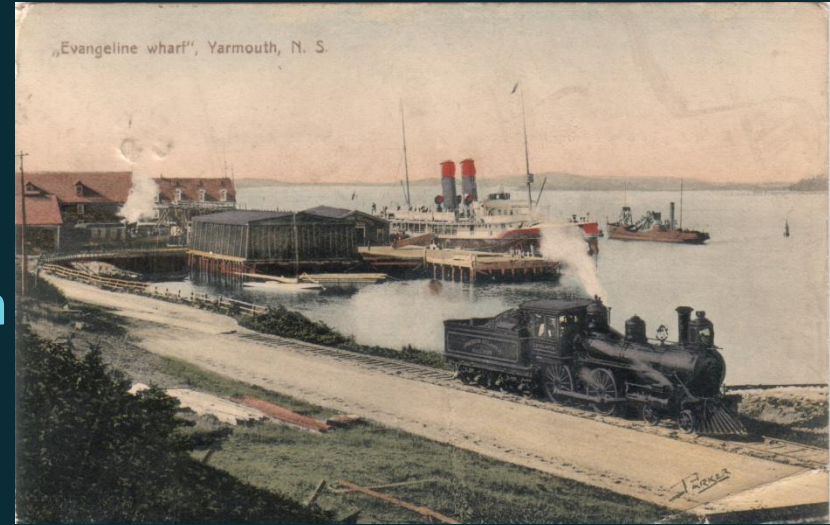
# Municipal Planning Strategy Review

- Rethink Traditional Planning
  - Do we need this?
  - Why do we have this?
  - What are we trying to achieve?
- Commenced March 2015
- MMM Group
- Collaboration with Town Staff

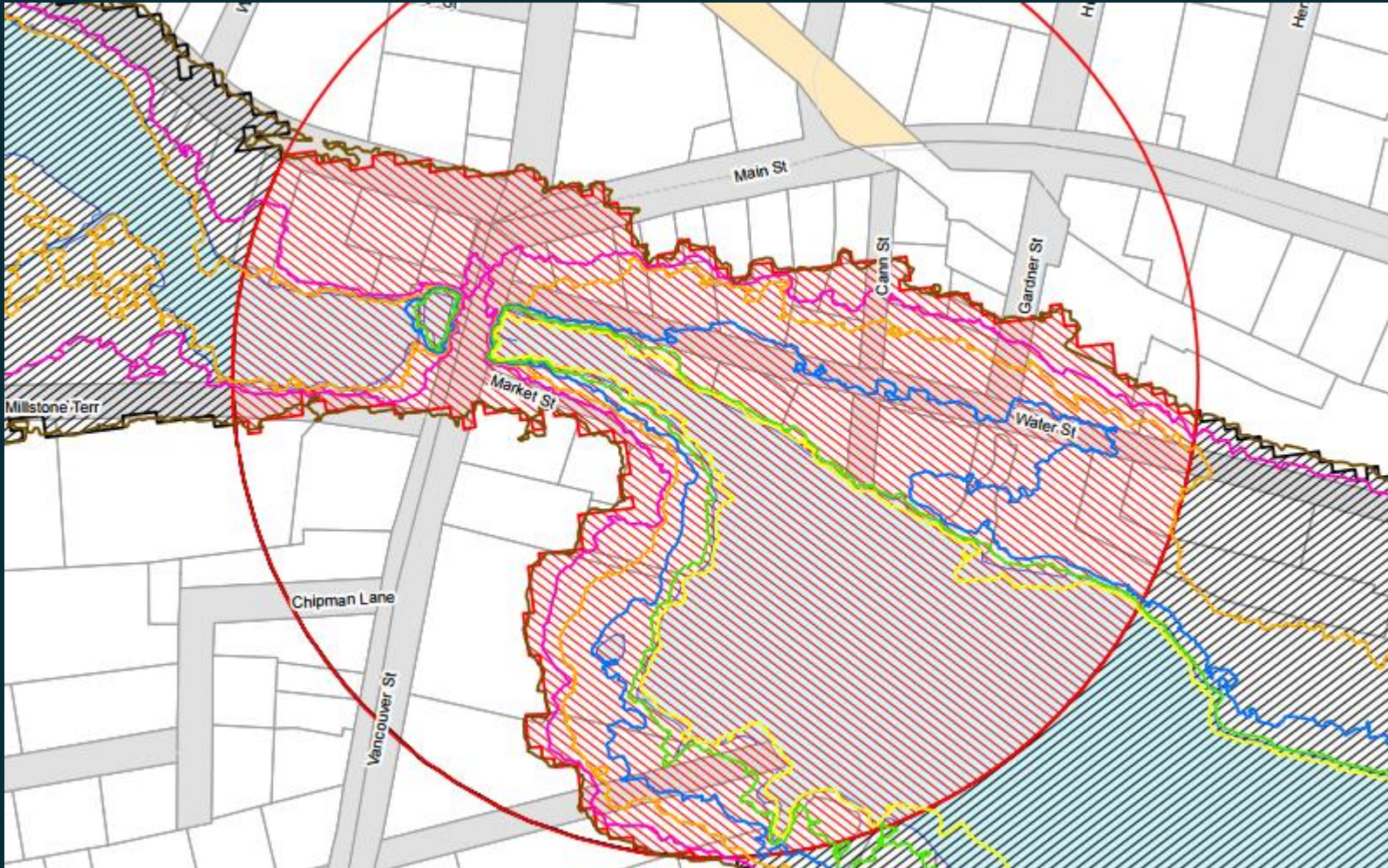


# Areas of Interest

- Healthy Living
- Historic Property Preservation
- Economic Development
- Immigration
- Ageing Population
- Family Retention
- Climate Change and Nature Protection
- Affordable Housing



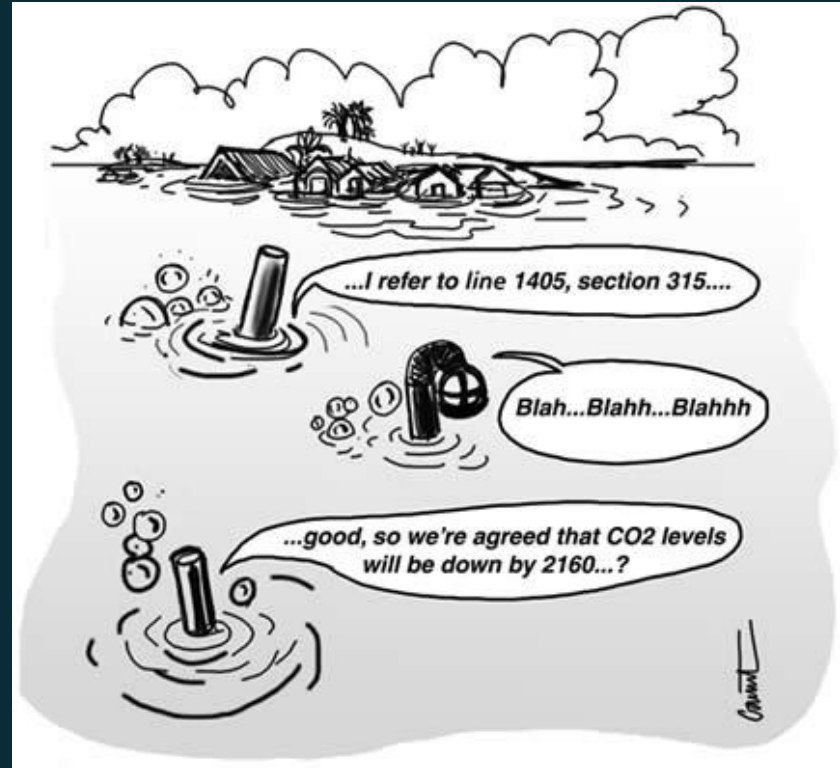
# Are we ready for Climate Change?



- Two Flood Impact Sources: Coastal & Broad Brook
- Immediate Threat: Storms
- Future Threat: Sea Level Rise

# What does the PSI say?

“To protect public safety and property and to reduce the requirement for flood control works and flood damage restoration in flood plains”



# What does the MPS say?

- Extremely sensitive and sensitive coastal areas are defined
  - Restrictive development controls
- Brood Brook has been zoned Environmentally sensitive (16m)
  - No development except parkland may occur



## Climate Change (p. 170)

“Because of considerable maritime risk from climate variability and extreme weather events, Yarmouth will not be able to adequately respond to these threats without incorporating risk management, emergency preparedness and response, and greenhouse gas emissions reduction actions into their regular activities”

# Public Participation as a Measuring Tool

- Social Media Campaign
- Survey Monkey Surveys
- Planning Newsletter
- Podcast – Planning on the Edge
- Attend Local Meetings
- Roundtable Public Meeting
- Staff Strategy Workshops
- Private Meetings
- Planners on the Street
- What Would You Like to See?





# What does the public want?

Choose plants that help (shore line protection & healthy living)

Create ponds in wet areas (storm water management)

More Educational Programs

Design Infrastructure & Plan Smart (ex: Fuel Storage on Water St)

Work within the environmental context

Encourage Landscaping & Planting to mitigate water runoff

Support Green Energy Options

Encourage Greener Building Materials

ON THE EDGE OF

EVERYWHERE

# Recommended Planning: Climate Change

- Monitor sea level rise
  - Developing appropriate flood proofing in coastal zone
- Emergency Planning
  - Hospital access
- Coordinated Climate Change Adaption Planning with District of Yarmouth
- Define Boundary for Broad Brook
  - Greater than 16 meter contour
  - Reduce the potential for basement flooding
- Develop Landscaping Requirements
- Benefits for Green Building Materials

## 5.25 Adjacent Yard Requirements: Floodplain & Environmentally

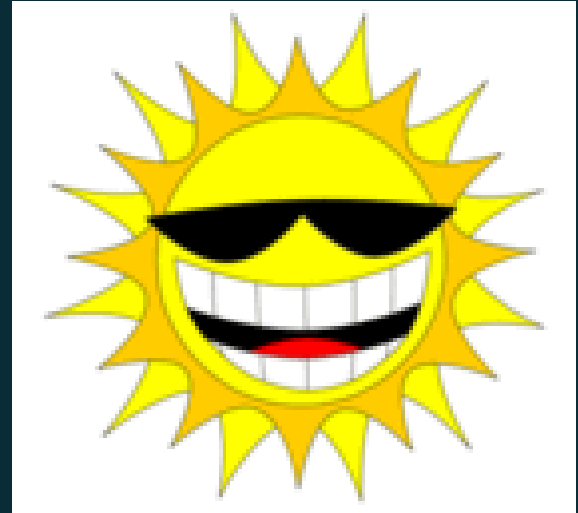
Notwithstanding anything else in this By-law, no development permit shall be issued for any building or structure on lands located adjacent to the Floodplain (O-2) zone or the Environmentally Sensitive (E-S) zone unless the required yard set-back is measured from the nearest main wall of any building or structure to the boundary line of the Floodplain (O-2) zone or the Environmentally (E-S) Zone.

Intent? Result?

# Other Initiatives?

## Community Energy Plan - EDO

- Policy to Achieve Vision
- Environmental Management
  - Increase efficiency of Municipal buildings
  - Examining current energy use in the Town
    - Identify opportunities
- Municipal Business Model to Reduce Carbon Footprint
- Viability Assessment Scorecard
  - Evaluate and implement recommendations



*“Our citizens value our natural environment and engender responsible development and growth. We share optimism for the future, based on a responsible and cohesive foundation.” – MPS Vision Statement*

# Other Initiatives?

## Property Assessed Clean Energy -CAO

- Voluntary Financing Mechanism
  - Municipality finances energy-related improvements for private property
  - Special tax on the properties to recover costs over a period of years
- Charge = First Lien
  - Migrates with change of ownership



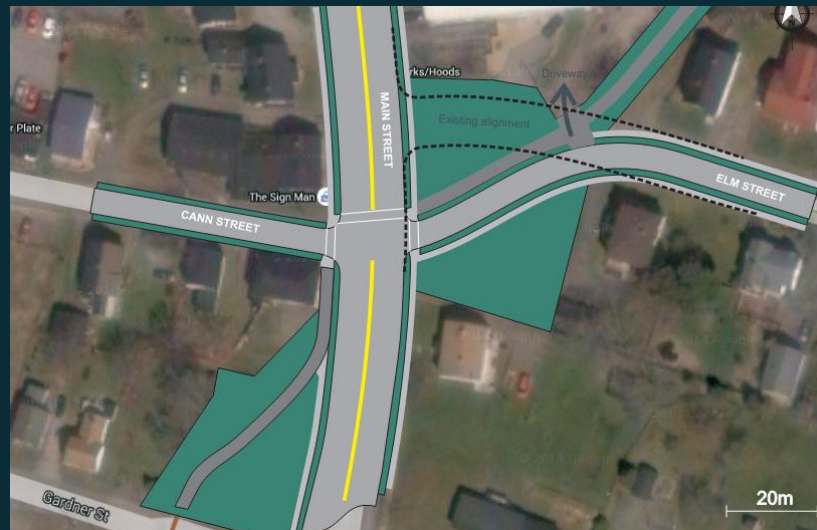
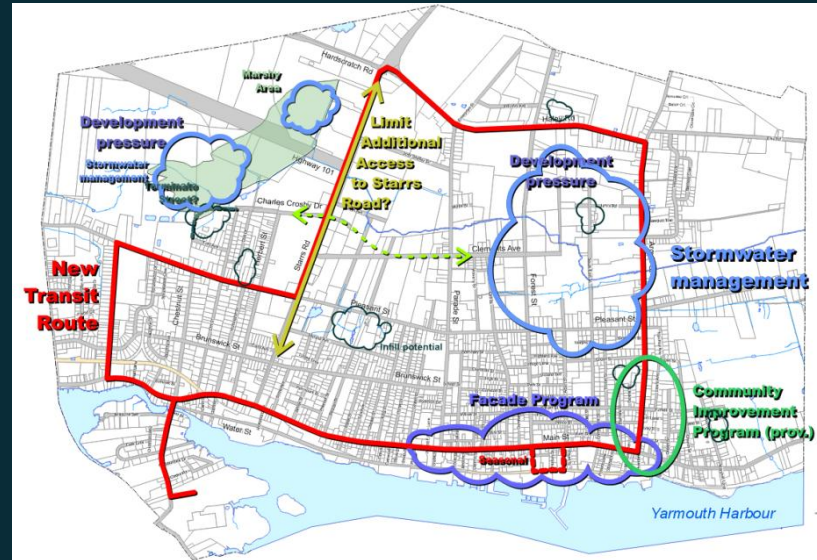
# Next Steps



- Draft Strategy for Dec
  - Further Public Participation
  - Bring to Council

# Finished Product

- Complete & Adopt by March 2016
- Strong Clear Document
  - Supports development
  - Represents feedback from residents, developers, and businesses





Thank You

Caroline King  
Director of Planning

ON THE EDGE OF  
EVERYWHERE