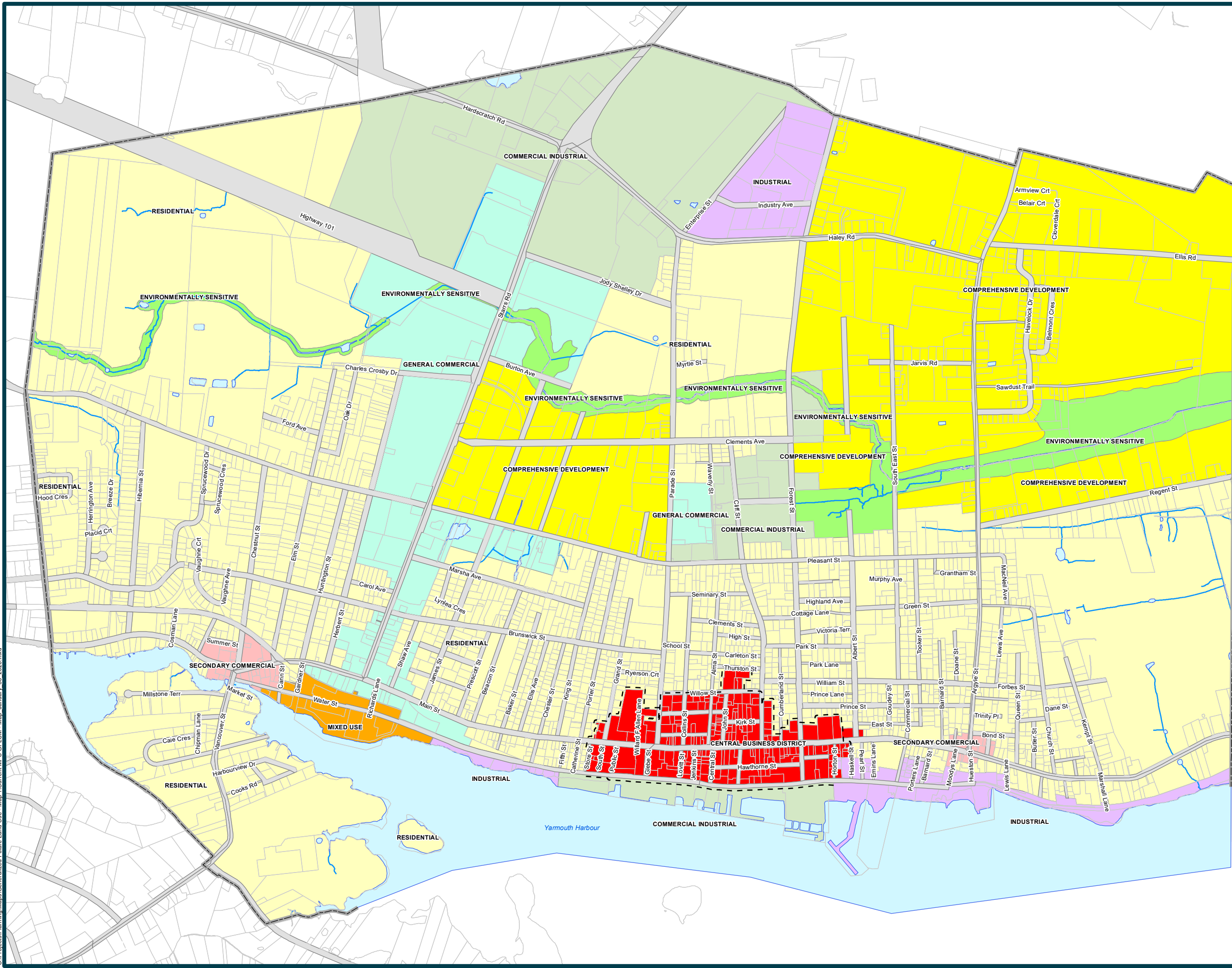


TOWN of YARMOUTH



GENERALIZED FUTURE LAND USE MAP

- Residential
- Environmentally Sensitive
- Central Business District
- General Commercial
- Secondary Commercial
- Commercial Industrial
- Industrial
- Mixed Use
- Comprehensive Development

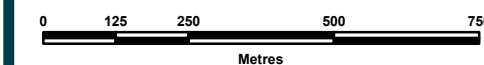


MUNICIPAL PLANNING STRATEGY - MAP 1 -

DATE: January 30, 2026

TOWN OF YARMOUTH,
PLANNING AND DEVELOPMENT

NOTE: Information contained on this map is subject to change.



PROPERTY BOUNDARY MAPPING SOURCE:
(1:10 000 NSPRD) NOVA SCOTIA GEOMATICS CENTRE, AMHERST,
CURRENT TO 15 JANUARY, 2025.

ROAD MAPPING SOURCE:
(NSCAF) NOVA SCOTIA GEOMATICS CENTRE, AMHERST,
CURRENT TO 15 JANUARY, 2026.

GFLU MAPPING SOURCE:
TOWN OF YARMOUTH, PLANNING DEPARTMENT,
CURRENT MPS GFLU (EFFECTIVE JANUARY 22, 2026).

WITH RESPECT TO THIS MAP, NEITHER THE TOWN OF YARMOUTH NOR ANY OF ITS EMPLOYEES, MAKES ANY WARRANTY OF ANY KIND, EITHER EXPRESSED OR IMPLIED, ARISING BY LAW OR OTHERWISE, INCLUDING BUT NOT LIMITED TO WARRANTIES OF EFFECTIVENESS, COMPLETENESS, ACCURACY, MERCHANTABILITY OR FITNESS FOR A PARTICULAR PURPOSE.