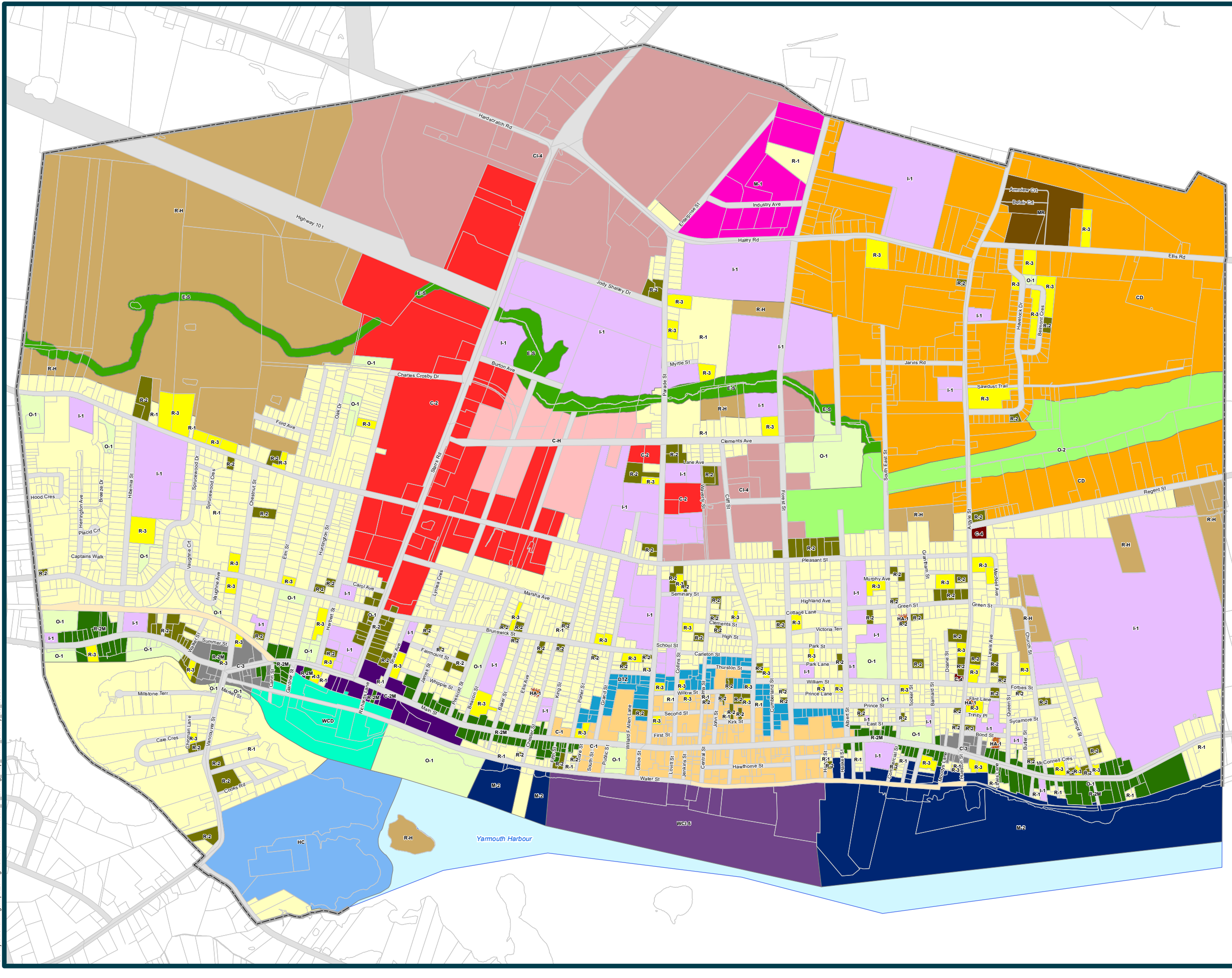


TOWN of YARMOUTH



ZONING MAP

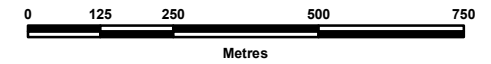


- Low Density Residential R-1
- Medium Density Residential R-2
- High Density Residential R-3
- Medium Density Residential Main St R-2M
- Residential Holding R-H
- Housing Accelerator HA-1
- Mixed Residential Development Park MR
- Downtown Commercial C-1
- General Commercial C-2
- General Commercial Main street C-2M
- Secondary Commercial C-3
- Local Commercial C-4
- Commercial Holding C-H
- Comprehensive Development CD
- Commercial Industrial CI-4
- Downtown Transit Zone DTZ
- Environmentally Sensitive E-S
- Health Campus HC
- Institutional I-1
- General Industrial M-1
- Waterfront Industrial M-2
- Open Space O-1
- Floodplain O-2
- Waterfront Commercial Industrial WCI-5
- Waterfront Comprehensive Development WCD

LAND USE BY-LAW - SCHEDULE "A" -

TOWN OF YARMOUTH, PLANNING AND DEVELOPMENT DATE: January 30, 2026

NOTE: Information contained on this map is subject to change.



PROPERTY BOUNDARY MAPPING SOURCE:
(1:10 000 NSPRD) NOVA SCOTIA GEOMATICS CENTRE, AMHERST.
CURRENT TO 15 JANUARY, 2026.

ROAD MAPPING SOURCE:
(NSCAF) NOVA SCOTIA GEOMATICS CENTRE, AMHERST.
CURRENT TO 15 JANUARY, 2026.

ZONING MAPPING SOURCE:
TOWN OF YARMOUTH, PLANNING DEPARTMENT.
CURRENT LUB ZONING (JANUARY 22, 2026).

WITH RESPECT TO THIS MAP, NEITHER THE TOWN OF YARMOUTH NOR ANY OF ITS EMPLOYEES, MAKES ANY WARRANTY OF ANY KIND, EITHER EXPRESSED OR IMPLIED, ARISING BY LAW OR OTHERWISE, INCLUDING BUT NOT LIMITED TO WARRANTIES OF EFFECTIVENESS, COMPLETENESS, ACCURACY, MERCHANTABILITY OR FITNESS FOR A PARTICULAR PURPOSE.