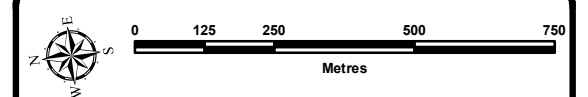


EXISTING LAND USE MAP

| | |
|--|-----|
| Residential (and number of dwelling units) | (2) |
| Commercial | |
| Industrial | |
| Institutional | |
| Open Space | |
| Parking Lot | |
| Public Utilities | |
| Vacant | |
| Right of Way | |
| Not Assigned | |
| Null | |

MUNICIPAL PLANNING STRATEGY - MAP 2 -

TOWN OF YARMOUTH, PLANNING AND DEVELOPMENT DATE: MAY 12, 2015



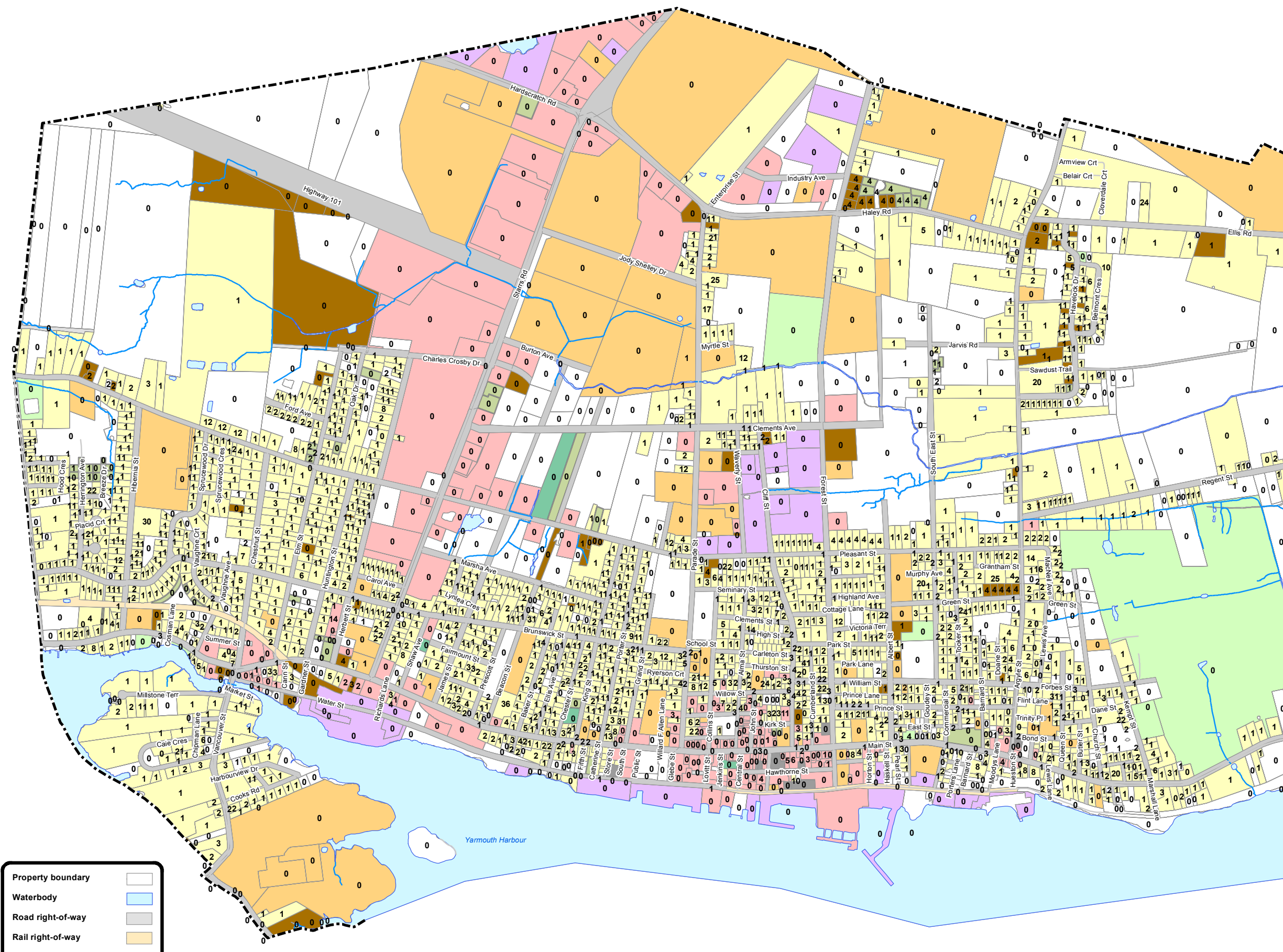
PROPERTY BOUNDARY MAPPING SOURCE:
(1:10 000 NSPRD) NOVA SCOTIA GEOMATICS CENTRE, AMHERST. CURRENT TO 19 APRIL 2015.

TOPOGRAPHIC MAPPING SOURCE:
(1:2 000) NOVA SCOTIA GEOMATICS CENTRE, AMHERST.
COMPILED FROM AERIAL PHOTOGRAPHY FLOWN ON APRIL 22, 2006.

ROAD MAPPING SOURCE:
(NSCAF) NOVA SCOTIA GEOMATICS CENTRE, AMHERST. CURRENT TO 15 SEPTEMBER 2012.

ZONING MAPPING SOURCE:
TOWN OF YARMOUTH, PLANNING DEPARTMENT. CURRENT LUB ZONING (OCTOBER 11, 2012).

WITH RESPECT TO THIS MAP, NEITHER THE TOWN OF YARMOUTH NOR ANY OF ITS EMPLOYEES, MAKES ANY WARRANTY OF ANY KIND, EITHER EXPRESSED OR IMPLIED, ARISING BY LAW OR OTHERWISE, INCLUDING BUT NOT LIMITED TO WARRANTIES OF EFFECTIVENESS, COMPLETENESS, ACCURACY, MERCHANTABILITY OR FITNESS FOR A PARTICULAR PURPOSE.



| | |
|-------------------|--|
| Property boundary | |
| Waterbody | |
| Road right-of-way | |
| Rail right-of-way | |
| Hydrology | |
| Town boundary | |

NOTE: Information contained on this map is subject to change.