









# TOWN of YARMOUTH



## CLIMATE CHANGE STORM SURGE AND SEA-LEVEL RISE SENSITIVE AREA MAP "A"

### Key

-  Climate Change Storm Surge and Sea-Level Rise Sensitive Area
-  Extreme Sensitive Areas
-  1 m Contour
-  2 m Contour
-  3 m Contour
-  4 m Contour
-  5 m Contour
-  6 m Contour

### LAND USE BY-LAW - SCHEDULE "G" -

DATE: APRIL 29, 2013  
TOWN OF YARMOUTH,  
PLANNING AND DEVELOPMENT

0 12.5 25 50 75 100

Metres

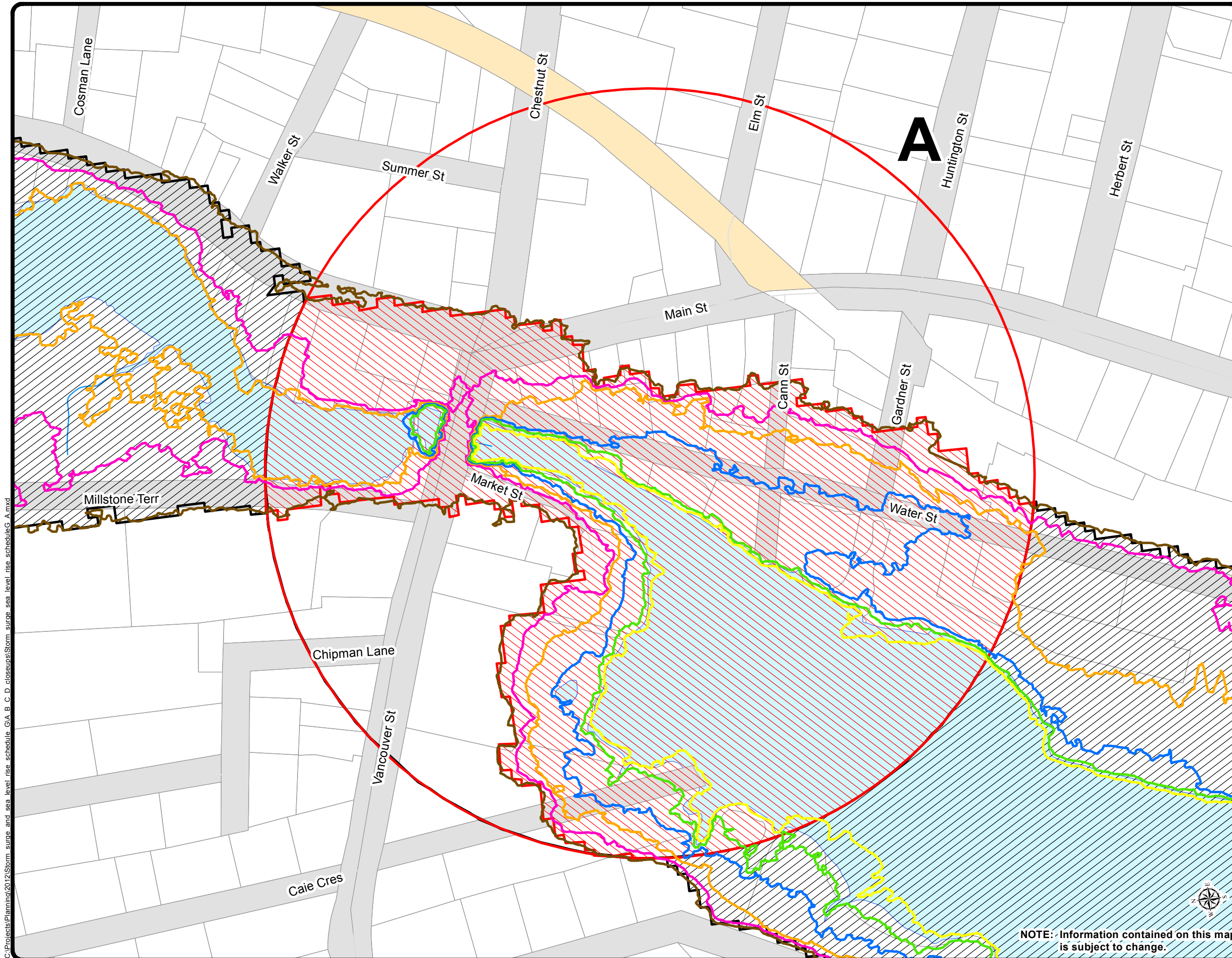
PROPERTY BOUNDARY MAPPING SOURCE:  
(1:10 000 NSPRD) NOVA SCOTIA GEOMATICS CENTRE, AMHERST.  
CURRENT TO 7 JULY 2012.

TOPOGRAPHIC MAPPING SOURCE:  
(1:2 000) NOVA SCOTIA GEOMATICS CENTRE, AMHERST.  
COMPILED FROM AERIAL PHOTOGRAPHY FLOWN ON APRIL 22, 2006.

LIDAR PROVIDED BY TIM WEBSTER  
APPLIED GEOMATICS RESEARCH GROUP (AGRG)

ROAD MAPPING SOURCE:  
(NSCAF) NOVA SCOTIA GEOMATICS CENTRE, AMHERST.  
CURRENT TO 15 JUNE 2012.

WITH RESPECT TO THIS MAP, NEITHER THE TOWN OF YARMOUTH NOR ANY OF ITS EMPLOYEES, MAKES ANY WARRANTY OF ANY KIND, EITHER EXPRESSED OR IMPLIED, ARISING BY LAW OR OTHERWISE, INCLUDING BUT NOT LIMITED TO WARRANTIES OF EFFECTIVENESS, COMPLETENESS, ACCURACY, MERCHANTABILITY OR FITNESS FOR A PARTICULAR PURPOSE.



NOTE: Information contained on this map is subject to change.

C:\Projects\Planning\2012\Storm surge and sea level rise schedule G\A B C D closeups\Storm surge sea level rise schedule G A.mxd