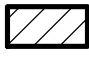









# TOWN of YARMOUTH



## CLIMATE CHANGE STORM SURGE AND SEA-LEVEL RISE SENSITIVE AREA MAP Map "A"

### Key

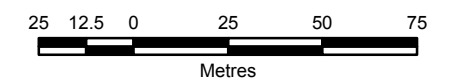
-  Climate Change Storm Surge and Sea-Level Rise Sensitive Area
-  Extreme Sensitive Areas
-  1 m Contour
-  2 m Contour
-  3 m Contour
-  4 m Contour
-  5 m Contour
-  6 m Contour



### LAND USE BY-LAW - SCHEDULE "G" -

DATE: JANUARY 26, 2021

TOWN OF YARMOUTH, PLANNING AND DEVELOPMENT

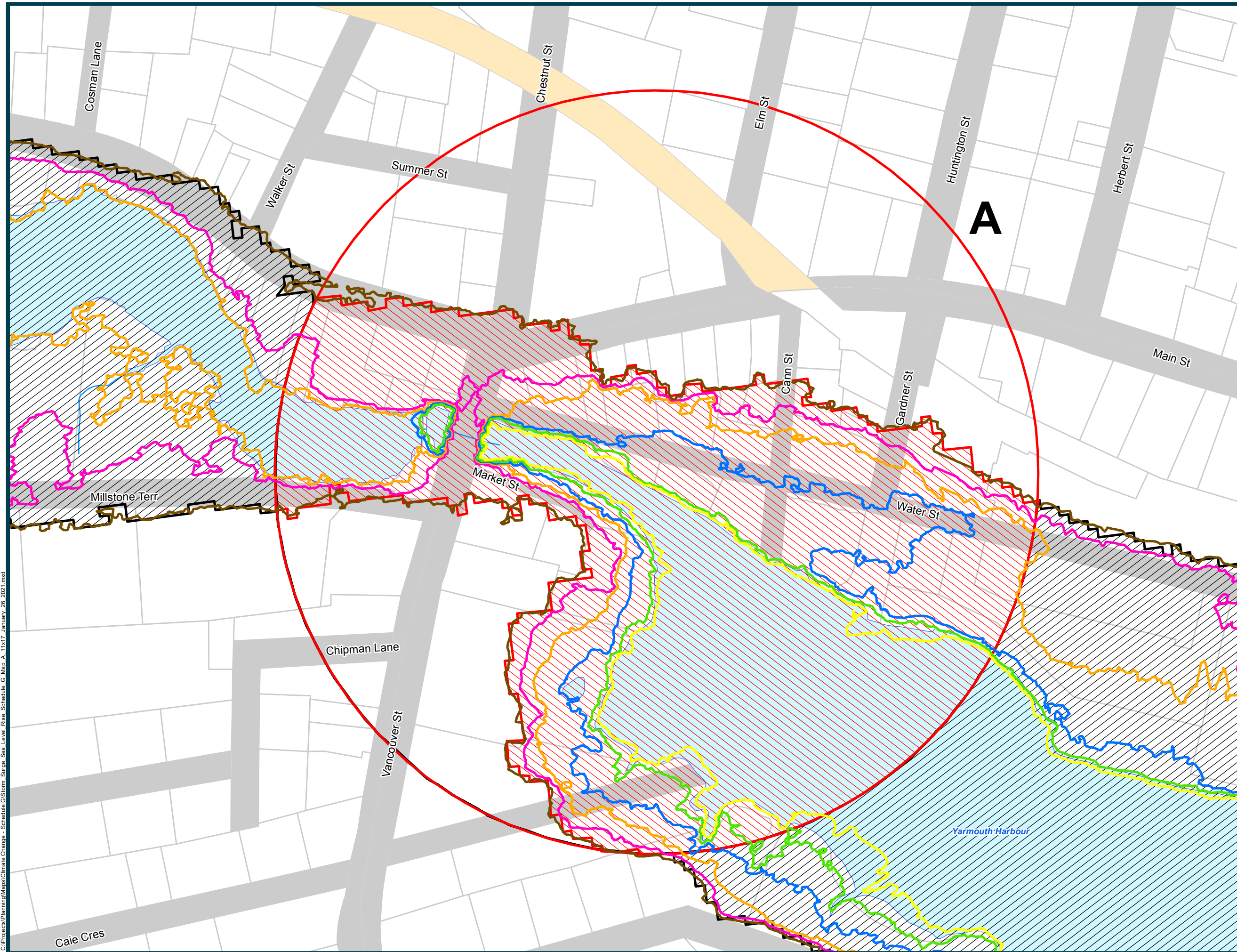


**NOTE:** Information contained on this map is subject to change.

**PROPERTY BOUNDARY MAPPING SOURCE:** (1:10 000 NSPRD) NOVA SCOTIA GEOMATICS CENTRE, AMHERST. CURRENT TO 19 JANUARY, 2021.

**ROAD MAPPING SOURCE:** (NSCAF) NOVA SCOTIA GEOMATICS CENTRE, AMHERST. CURRENT TO 19 JANUARY, 2021.

WITH RESPECT TO THIS MAP, NEITHER THE TOWN OF YARMOUTH NOR ANY OF ITS EMPLOYEES, MAKES ANY WARRANTY OF ANY KIND, EITHER EXPRESSED OR IMPLIED, ARISING BY LAW OR OTHERWISE, INCLUDING BUT NOT LIMITED TO WARRANTIES OF EFFECTIVENESS, COMPLETENESS, ACCURACY, MERCHANTABILITY OR FITNESS FOR A PARTICULAR PURPOSE.



C:\Projects\Planning\Climate Change - Schedule G\Storm Surge Sea Level Rise Schedule G Map A - 11x17 January 26 2021.mxd